



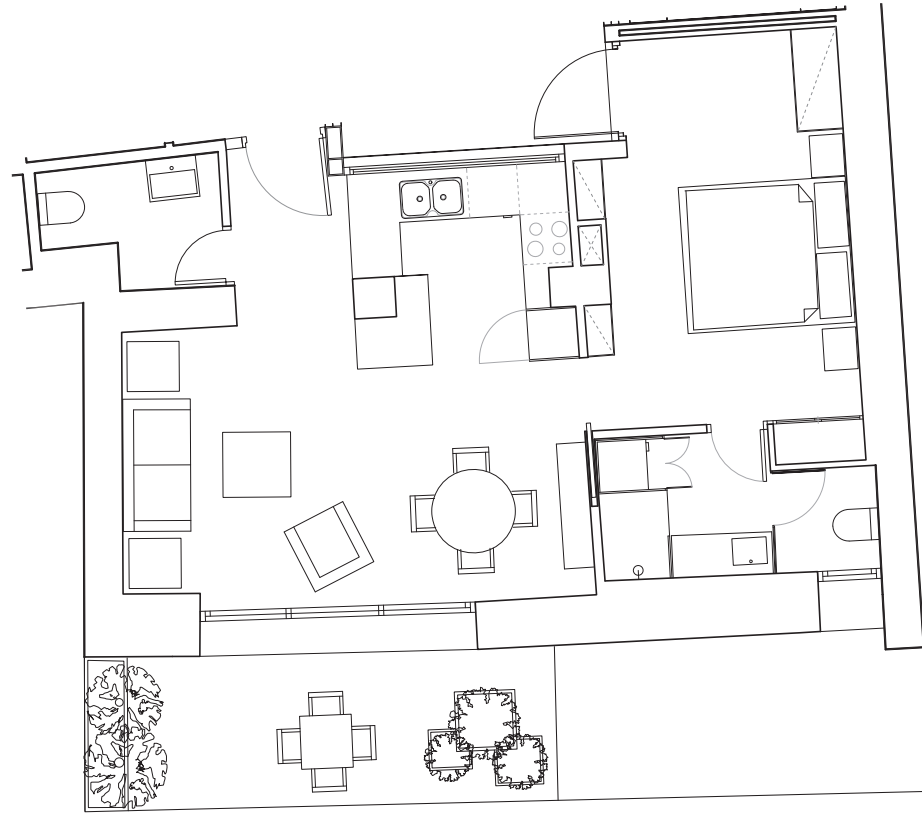
POZOS DULCES
TWENTY NINE



APT. 102

GROUND FLOOR

- 1 BEDROOM
- 1 BATHROOM
- 1 GUEST TOILET
- PRIVATE PATIO OF 10.29m
- FITTED WARDROBES
- CEILING 2.7m
- DANISH DESIGN KITCHEN



PROPERTY SPECIFICATIONS

APARTMENT	2
GROUND FLOOR	DOOR B
BEDROOMS	1
TOTAL USEFUL AREA	48.51m ²

BUILT AREA	64.38m ²
BUILT AREA + COMMON SPACES	79.08m ²
OUTDOOR AREA	10.29m ²
TOTAL AREAS	89.37m²



Disclaimer

Some of the elements shown on the images may be listed as optional to an additional cost such as the jacuzzi on the terrace of APT. 301, as well as the displayed furniture's. Unforeseen issues during construction might lead to changes in measures.

