



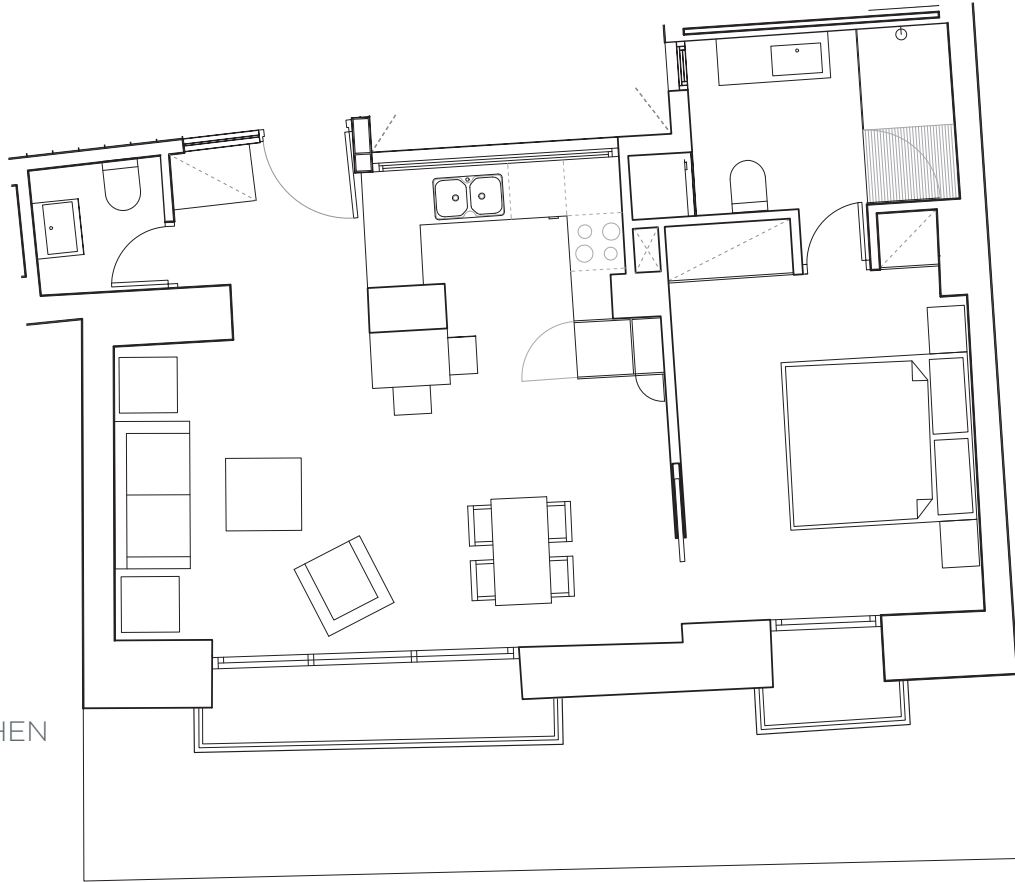
POZOS DULCES
TWENTY NINE



APT. 202

FIRST FLOOR

- 1 BEDROOM
- 1 BATHROOM
- 1 GUEST TOILET
- 2 BALCONIES
- FITTED WARDROBES
- CEILING 2.7m
- DANISH DESIGN KITCHEN



PROPERTY SPECIFICATIONS

APARTMENT	4
FIRST FLOOR	DOOR B
BEDROOMS	1
TOTAL USEFUL AREA	49.89m ²

BUILT AREA	63.59m ²
BUILT AREA + COMMON SPACES	73.32m ²
OUTDOOR AREA	0m ²
TOTAL AREAS	73.32m ²



Disclaimer

Some of the elements shown on the images may be listed as optional to an additional cost such as the jacuzzi on the terrace of APT. 301, as well as the displayed furniture's. Unforeseen issues during construction might lead to changes in measures.

