



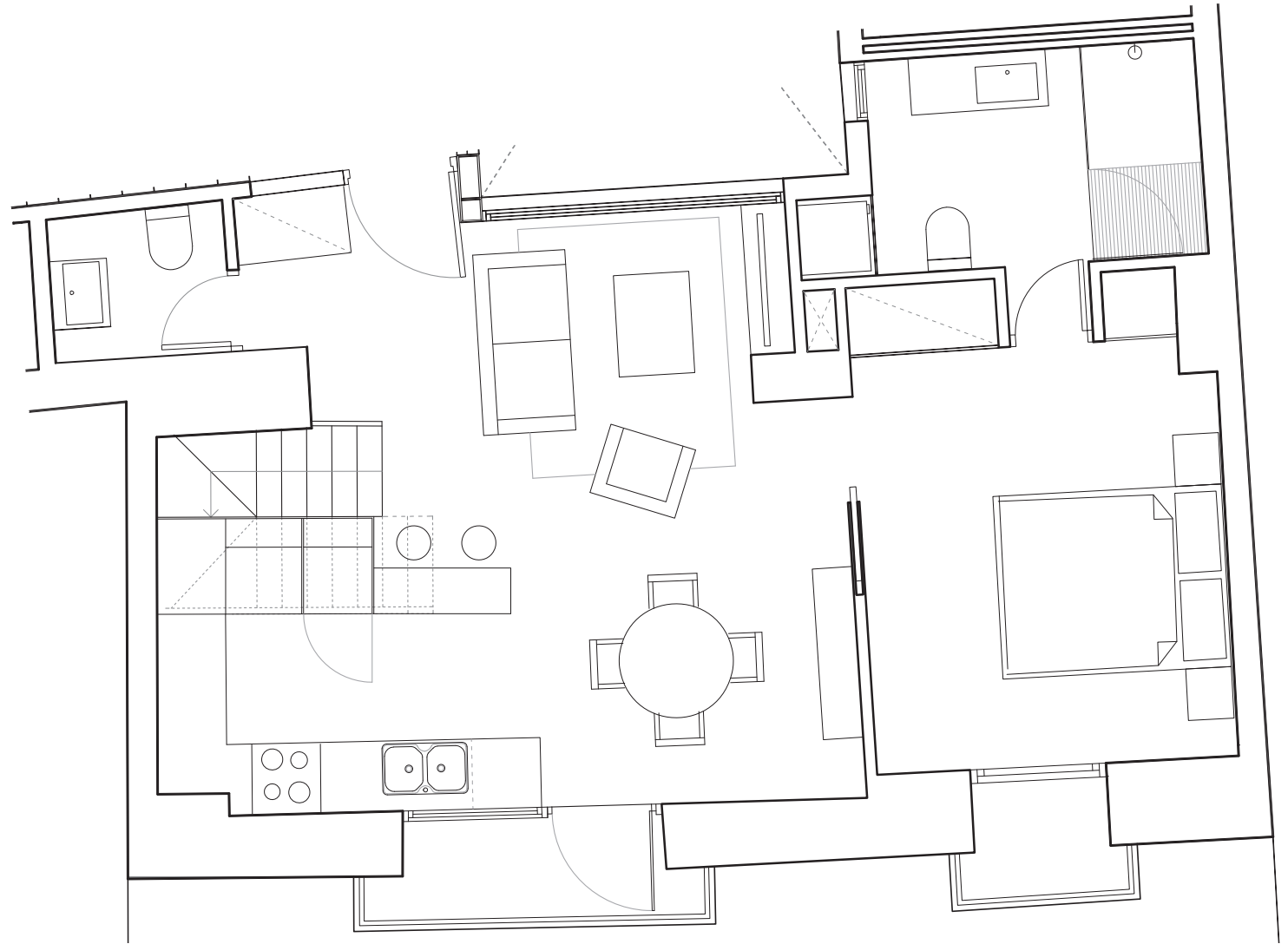
POZOS DULCES
TWENTY NINE



APT. 302

SECOND FLOOR DUPLEX LEVEL 1

- DUPLEX PENTHOUSE
- 2 BEDROOMS
- 2 BATHROOMS
- 1 GUEST TOILET
- 2 BALCONIES
- BOTH BEDROOMS EN-SUITE
- PRIVATE ROOF TERRACE
- FITTED WARDROBES
- DANISH DESIGN KITCHEN
- CEILING 2.7M



PROPERTY SPECIFICATIONS

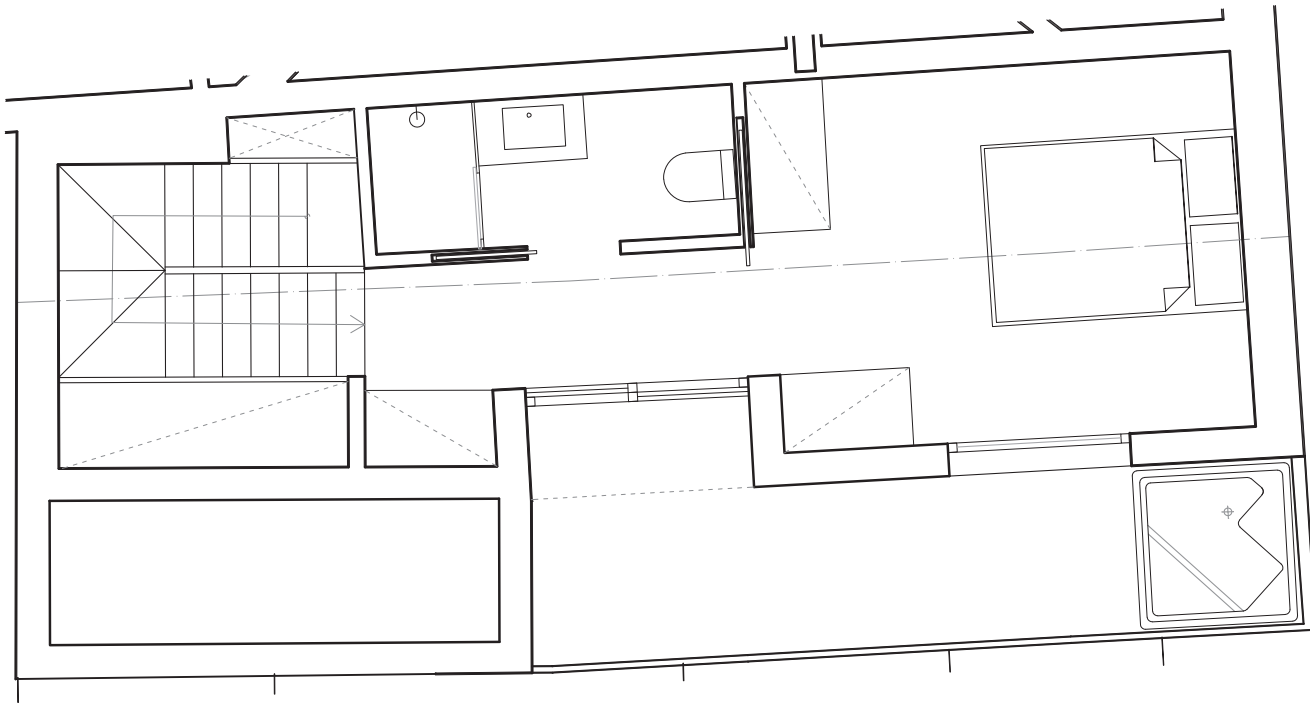
APARTMENT	6
SECOND FLOOR DUPLEX	DOOR A
BEDROOMS	2
TOTAL USEFUL AREA	87.53m ²

BUILT AREA	112.71m ²
BUILT AREA + COMMON SPACES	138.55m ²
OUDOOR AREA	17.18m ²
TOTAL AREAS	155.73m ²



APT. 302

SECOND FLOOR DUPLEX LEVEL 2



Disclaimer

Some of the elements shown on the images may be listed as optional to an additional cost such as the jacuzzi on the terrace of APT. 301, as well as the displayed furniture's. Unforeseen issues during construction might lead to changes in measures.