

Apt. 3: Duplex Pent House - SOLD!

3 bedrooms *At the entrance level (second floor of the building)

3 bathrooms *2 of them on-suite

Open Kitchen * Open to the living room and terrace area on the upper level

Rooftop Jacuzzi *On the upper terrace with outdoor dining area



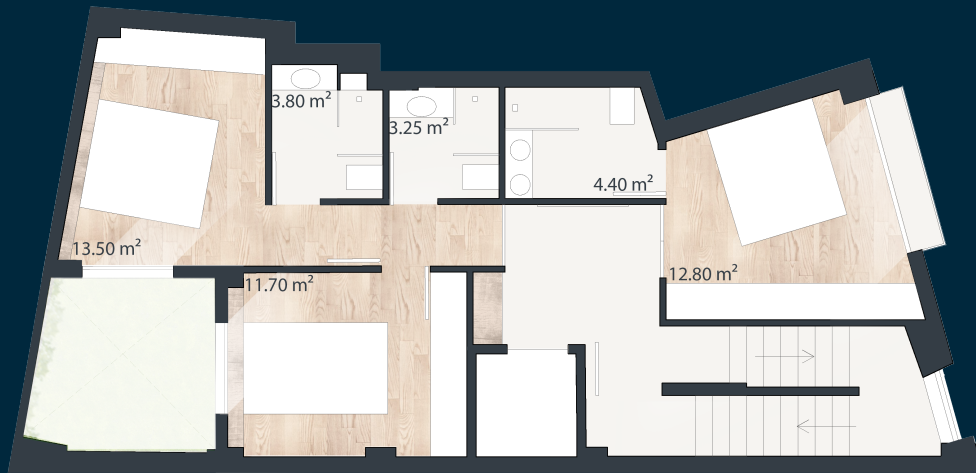
| | |
|------------------|-----------------------|
| Useful area | 110,02 m ² |
| Terrace | 19,55 m ² |
| Common spaces | 41,14% |
| Total Built Area | 137,11 m ² |

Price List *Optionals

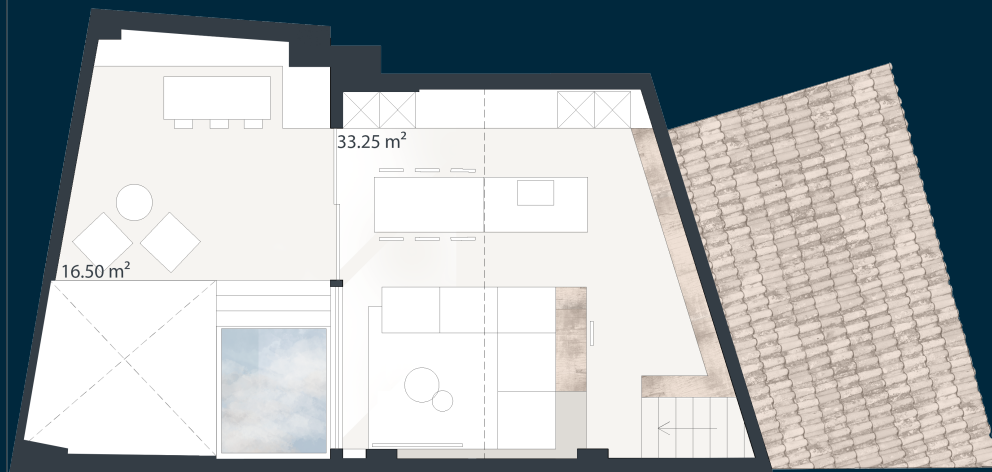
| | |
|--|---------|
| +Floor to ceiling doors * 6 doors | €5.750 |
| +Massive wooden deck flooring *on every room (micro-cement on bathrooms) | €6.800 |
| +Hidden sanitary fittings + countertop sink *3 bathrooms | €6.750 |
| +High standard lighting design *Hyde trimless from FARO Recessed ceiling lamps | €3.000 |
| +Brick wall beadheads * 800 € / each bedroom | €2.400 |
| +Extra size windows on patio facade and terrace * As shown on the renders | €4.600 |
| +Special designed entrance door * As shown on renders | €1.300 |
| +Special wardrobes with dark mirror doors and interior lighting *23 m ² | €15.400 |
| +White laqued wardrobes with fabric interior finishing *23 m ² | €8.500 |
| +Climate integrated system with floor heating *Aerothermia system in both levels | €11.700 |
| +Outdoor jacuzzi *5 People spa area with wooden steps. | €5.000 |
| TOTAL *All optionals included except personalized kitchen | €71.200 |

*Personalized kitchen to be quoted according to final design

Apt. 3: Duplex Pent House



Second floor level 56,58 m² *usefull area



Upper level 33,89 m² + 19,55 m² terrace *usefull

