

## Apt. 1: Duplex Ground Floor. Price: €385.000

1+2 bedrooms \*2 of them in the extra option of livable duplex level  
1+1 bathrooms \*1 of them in the extra option of livable duplex level  
Open Kitchen  
Double facade \*Calle jinetes + Patio  
4 meters ceiling high



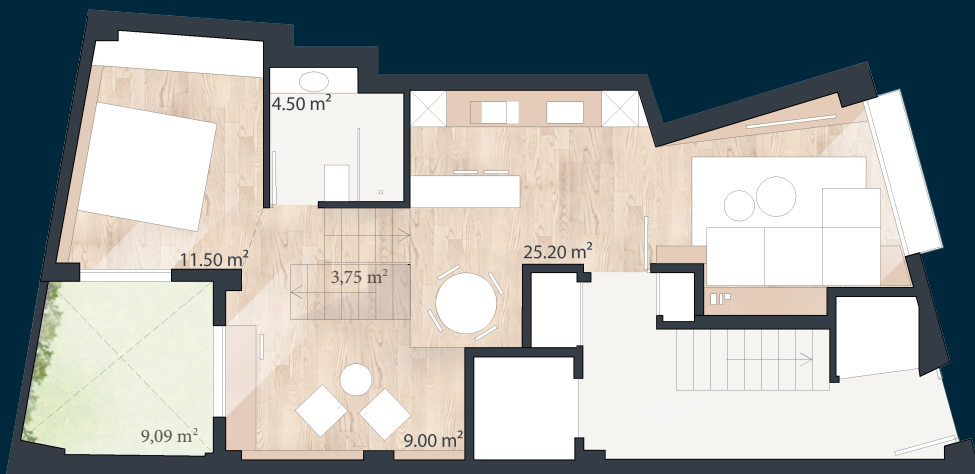
Useful area	99,54 m <sup>2</sup>
Patio area	9,09 m <sup>2</sup>
Common spaces	37,19 %
<b>Total Built Area</b>	<b>123,93 m<sup>2</sup></b>

### Extra Options Price List

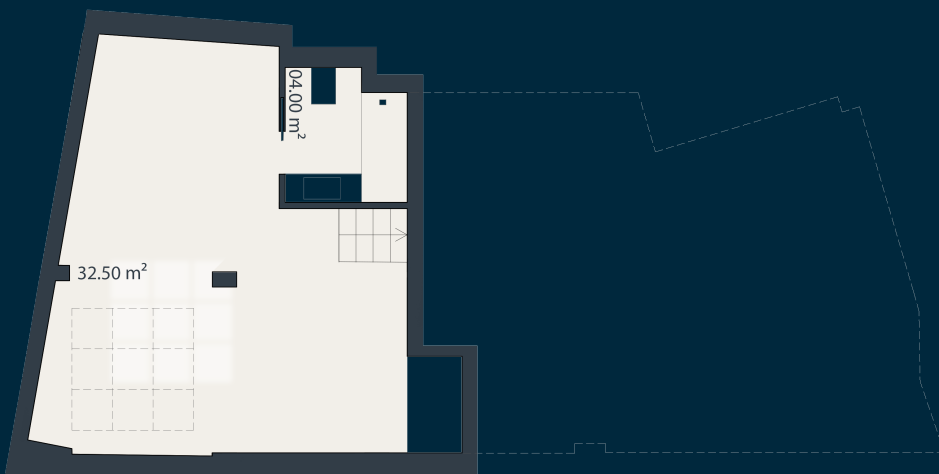
+Livable duplex option *2 bedrooms + 1 bathroom + Patio ( basic qualities )	€12.500
+Floor to ceiling doors * 5 doors	€4.800
+Massive wooden deck flooring *upper and lower level (micro cement in bathrooms)	€4.600
+Hidden sanitary fittings + countertop sink *2 bathrooms	€4.500
+High standard lighting design *Hyde trimless from FARO Recessed ceiling lamps	€2.400
+Brick wall bead heads * €800 / each bedroom	€2.200
+Extra size on patio windows * upper level 1.400 / lower level €2400	€3.800
+Special entrance door with wooden shelves niches * as shown on renders	€1.300
+Special wardrobes with dark mirror doors and interior lighting *17,25 m <sup>2</sup>	€11.300
+White lacquered wardrobes with fabric interior finishing *17,25 m <sup>2</sup>	€6.200
+Climate integrated system with floor heating *on both levels	€10.400
<b>TOTAL</b> *All optionals included except personalized kitchen	<b>€64.000</b>

\*Personalized kitchen to be quoted according to final design

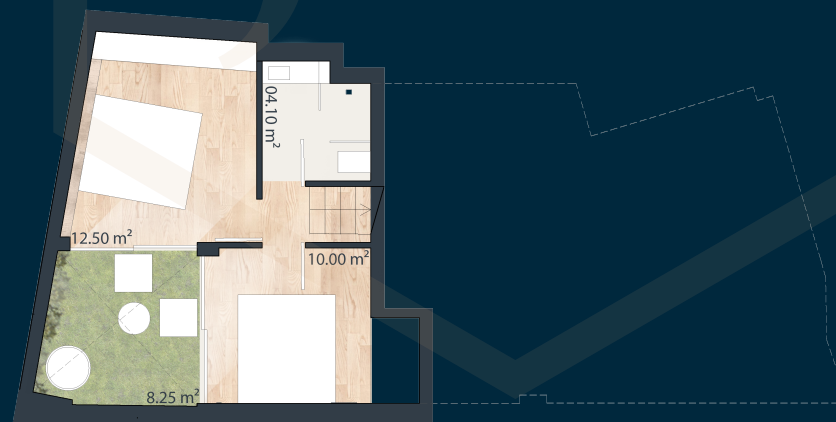
# Apt. 1: Duplex Ground Floor.



Groundfloor 53,95 m<sup>2</sup> + 9,09 m<sup>2</sup> patio \*usefull area



Duplex Level 36,50 m<sup>2</sup> \*usefull area



Optional Duplex level 28,25 m<sup>2</sup> + 9,09 m<sup>2</sup>Patio \*usefull area